

INSTALLATION GUIDE ENTERPRISE DYNAMICS 9.0





PLEASE NOTE PRIOR TO INSTALLING

- On Windows 8, Windows 7 and Windows Vista you must have Administrator rights to install the software.
- Installing Enterprise Dynamics on a network can be done in two ways. One is to install the application on all client computers. The other is to install the application on the server, and to run it from the client computer. For details, read the section **Network Configuration**.
- Licensing Enterprise Dynamics can be done by activating the license(s) on a client computer or on a server.
- Read the **System Requirements** at the end of this document to see if your system meets these requirements.

Dear User,

Thank you for purchasing Enterprise Dynamics!
This document describes the installation procedure for Enterprise Dynamics 9.

ATTENTION: Your software is protected with an online license activation system. For the software to work, you require a working internet connection.

ATTENTION: After activation of the software, the ED license is bound to the hardware. Limited hardware components can be changed during the contract period; an installation on another PC system is not possible without prior approval by INCONTROL.

ATTENTION: It is not possible to place the licenses on virtualized hardware.

ATTENTION: Enterprise Dynamics is a Win32 application and runs only on the Microsoft Windows platforms supporting 32-bit.

TO INSTALL THE SOFTWARE

1. a. You received the software in a box

Insert the USB card into a free USB port. An information application will be launched automatically. In the Menu select 'Installation ED9' and follow the instructions. If autorun doesn't start the application, then run the "SETUP\setup.exe" program from the command line or windows explorer.

b. You received the software digitally

If the software is delivered digitally, you find a download link in the license document. Launch the installer when the download is complete.

Note: Make sure that you install every major release from Enterprise Dynamics (for example the 9.0 version) into a new directory. Minor releases must be installed into an existing major release install directory.

Note: When you re-install the software on the same machine, make sure that you do not de-install the Codemeter Runtime Kit and license information. You can deselect the 'Software License Manager' section during the installation process when there is an active license on your machine or available in the network.

2. When the installation is complete, please verify that you have the Codemeter Runtime Kit installed and a license container is present. This is the case when a red icon is visible in the taskbar:



Note: If you don't see this icon in your taskbar, please contact us to setup your license container.

On the following pages, a number of activation methods are described in detail. Select your setup and follow the procedure.



DIRECT ACTIVATION VIA WEBPAGE

You have installed the software on your computer and the red icon is visible in the taskbar. Your computer has a working internet connection.

1. With your software, you received a ticket to collect your license. At the end of the installation process you can leave the 'License Enterprise Dynamics' checkbox ticked and it will direct you to the URL to activate your license. Alternatively, you can select the option 'Activate License' from the start menu or start screen. It will open your web browser with the following URL: <https://lc.codemeter.com/63706/depot/index.php>
2. You will see the following screen.

Enterprise Dynamics®, Pedestrian Dynamics® & SportEvac® | © 2000-2013 INCONTROL Simulation Solutions | 2013-11-27 10:25:26 (CET)
CodeMeter License Central WebDepot v13.09.21.200 | © 2012-2013 WIBU-SYSTEMS AG | Legal Notice | 2013-11-27 09:25:26 (UTC)



- Your ticket has the following format: XXXXX-XXXXX-XXXXX-XXXXX-XXXXX.
Enter your ticket in the 'Ticket' field and press 'Search'. You will see the following screen:

Your Licenses

- Choose the licenses you want to activate.
- Choose the locally connected CmContainer.
- Click "Activate Licenses".

<input checked="" type="checkbox"/>	Product ID	Product Name	Status
<input checked="" type="checkbox"/>	ED002	Enterprise Dynamics Developer	Available

Choose your CmContainer
32767-3645971329 (INCONTROL) [refresh]

Offline Activation

Enterprise Dynamics®, Pedestrian Dynamics® & SportEvac® | © 2000-2013 INCONTROL Simulation Solutions | 2013-11-27 11:46:41 (CET)
CodeMeter License Central WebDepot v13.09.21.200 | © 2012-2013 WIBU-SYSTEMS AG | Legal Notice | 2013-11-27 10:46:41 (UTC)

ATTENTION: All the selected licenses are transferred to the machine you are working on. Having multiple licenses on a single machine makes only sense if you are configuring a (license) server. Remember, after activation, the license is bound to the hardware.
NOTE: Alternatively, you might also see activation using Java/ActiveX. You can select this option and follow the instructions in the next section.

- When everything is setup correctly, you will see a unique identifier in the CmContainer dropdown selection. Press 'Activate Licenses' and the license will be placed on your computer. The following progress is shown in your browser:

Online Activation

! **Please wait!** The selected licenses will be transferred into your CmContainer. **This process may take several minutes.** Please, do not remove the CmContainer and do not refresh this page during this process.

Starting activation.
 Generating license request.
 Getting license from server.
 Activating license.
 Generating receipt.
 Sending receipt.

- When the activation is ready, you will see the following screen:

Online Activation

License successfully activated!

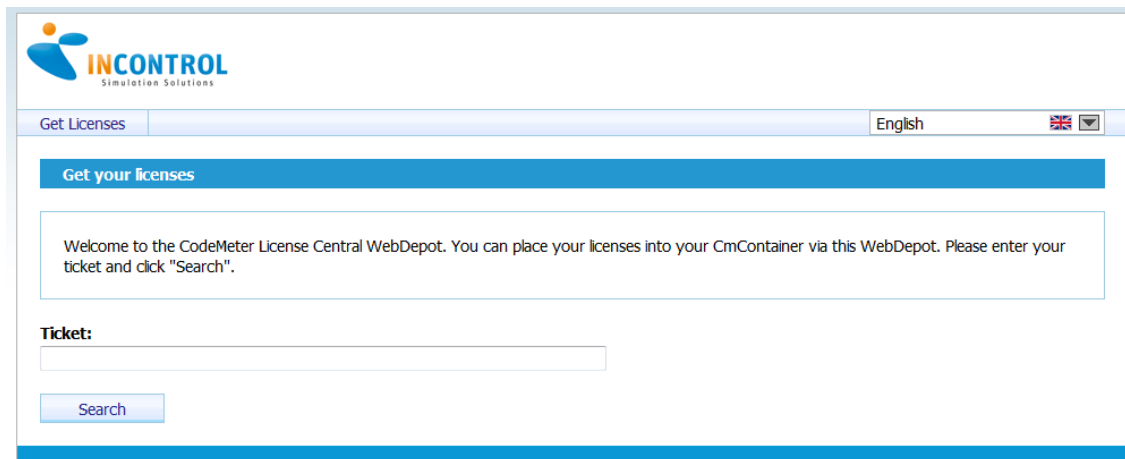
- When the process was successful, you will see the Codemeter icon display green:



DIRECT ACTIVATION VIA WEB PAGE (ACTIVEX/JAVA)

You have installed the software on your computer and the red icon is visible in the taskbar. Your computer has a working internet connection.

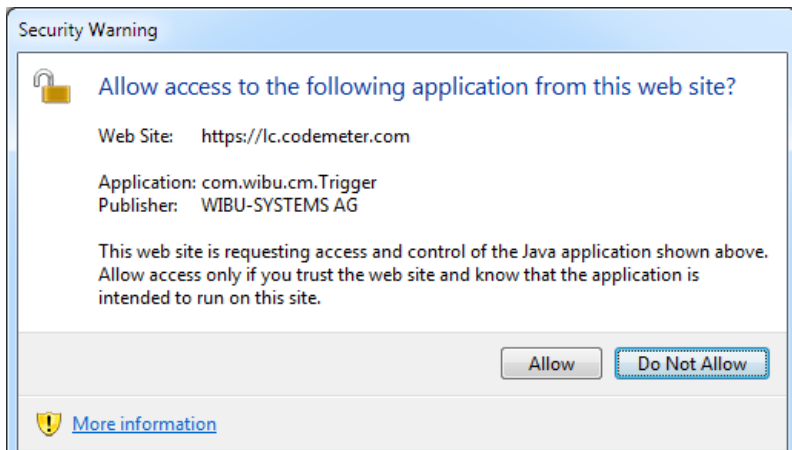
1. With your software, you received a ticket to collect your license. At the end of the installation process you can leave the 'License Enterprise Dynamics' check box ticked and it will direct you to the URL to activate your license. Alternatively, you can select the option 'Activate License' from the start menu or start screen. It will open your web browser with the following URL: <https://lc.codemeter.com/63706/depot/index.php>
2. You will see the following screen.



Enterprise Dynamics®, Pedestrian Dynamics® & SportEvac® | © 2000-2013 INCONTROL Simulation Solutions | 2013-11-27 10:25:26 (CET)
CodeMeter License Central WebDepot v13.09.21.200 | © 2012-2013 WIBU-SYSTEMS AG | Legal Notice | 2013-11-27 09:25:26 (UTC)

3. Enter your ticket in the 'Ticket' field and press 'Search'. Your ticket has the following format: XXXXX-XXXXX-XXXXX-XXXXX-XXXXX
4. Your browser uses Java/ActiveX to activate your license. You might get a security warning to allow access from <https://lc.codemeter.com> to the Java application. Allow the add-on to run or choose offline activation. The changes are needed to place the license in your container.

Mozilla Firefox:





Internet Explorer:

Your Licenses

1. Choose the licenses you want to activate.
2. Choose the locally connected CmContainer.
3. Click "Activate Licenses".

Product ID	Product Name	Status
<input checked="" type="checkbox"/> ED002	Enterprise Dynamics Developer	Available

Java/ActiveX is not enabled. Please enable Java/ActiveX in your Browser or use Offline Activation.

Choose your CmContainer
 Plugin not loaded

Activate Licenses

Offline Activation

Enterprise Dynamics®, Pedestrian Dynamics® & SportEvac® | © 2000-2013 INCONTROL Simulation Solutions | 2013-11-27 11:28:25 (CET)
 CodeMeter License Central WebDepot v13.09.21.200 | © 2012-2013 WIBU-SYSTEMS AG | Legal Notice | 2013-11-27 10:28:25 (UTC)

ATTENTION: All the selected licenses are transferred to the machine you are working on. Having multiple licenses on a single machine makes only sense if you are configuring a (license) server. Remember, after activation, the license is bound to the hardware.

NOTE: Alternatively, your machine might not have an internet connection. You can select the offline activation method described in the next section (activation via upload/download).

5. When everything is setup correctly, you will see a unique identifier in the CmContainer drop down selection. Press 'Activate Licenses' and the license will be placed on your computer. The following progress is shown in your browser:

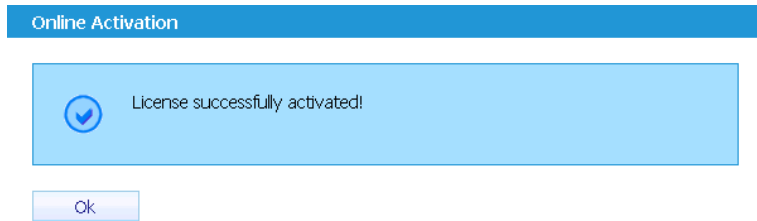
Online Activation

Please wait! The selected licenses will be transferred into your CmContainer. **This process may take several minutes.** Please, do not remove the CmContainer and do not refresh this page during this process.

Starting activation.
 Generating license request.
 Getting license from server.
 Activating license.
 Generating receipt.
 Sending receipt.



6. When the activation is ready, you will see the following screen:



7. When the process was successful, you will see the Codemeter icon display green:

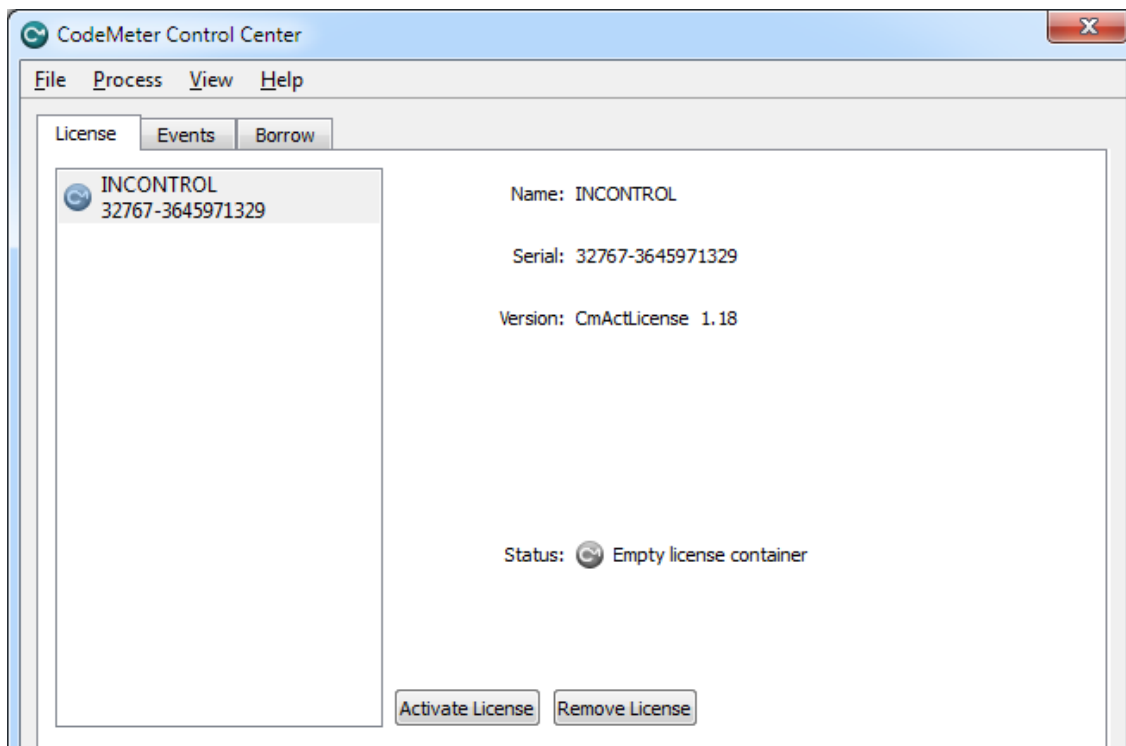




ACTIVATION VIA UPLOAD/DOWNLOAD

You have installed the software on your computer and the red icon is visible in the taskbar. Your computer does not have a working internet connection but you have another internet connected computer available.

1. On the computer where you installed Enterprise Dynamics, open CodeMeter Control Center. If several CmContainer are connected to the computer, select the INCONTROL CmContainer.

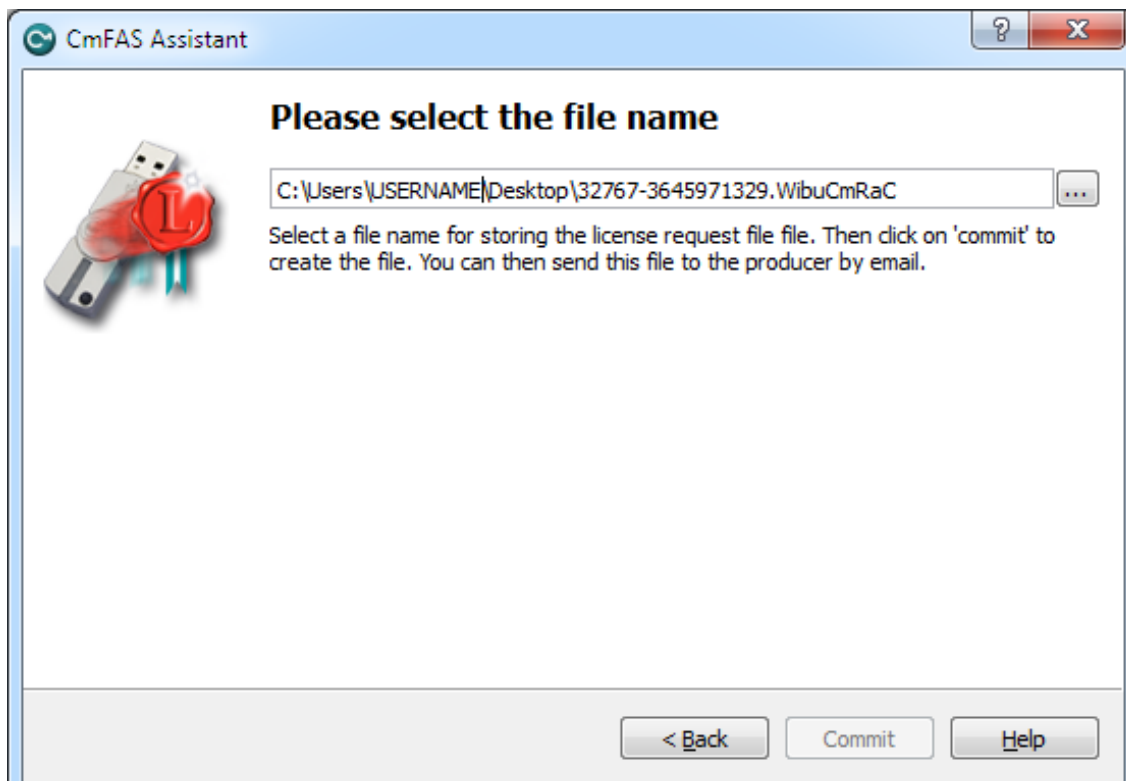




2. Click on the activate license button.

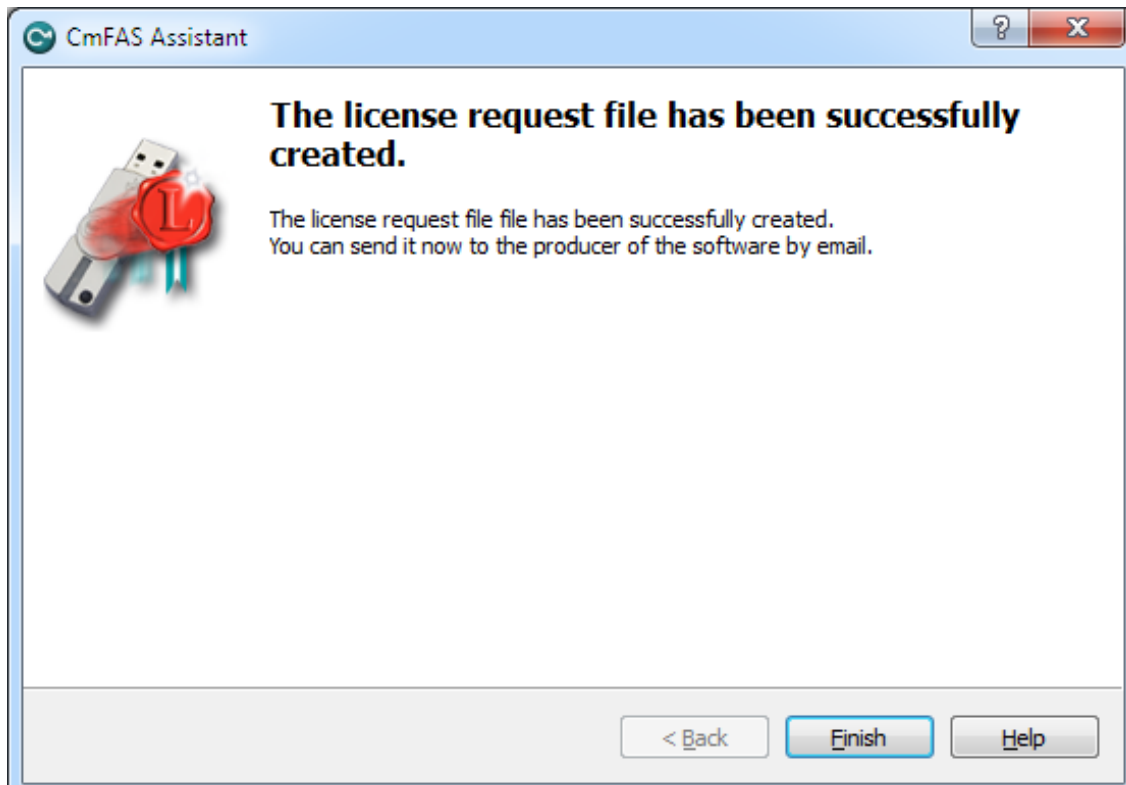


3. The CodeMeter Field Activation (CmFAS) Assistant opens with a welcome dialog.
4. The starting dialog prompts you to proceed. There you select 'creating a license request'. After your selection click the "Next" button.





5. A filename and save location is presented. Select the location for the file and press 'commit'.
6. Finally, a dialog displays which confirms the successful creation of the license request file. Click the "Finish" button to close the dialog.



7. Take this file with you to the internet connected PC (e.g. on a flash drive, USB device, CD...).
8. Open your web browser and enter the following URL: <https://lc.codemeter.com/63706/depot/index.php>



- On the web page that opens, you enter the ticket you received with your software. On the screen that appears you will see your software products.

INCONTROL
Simulation Solutions

Get Licenses English

Your Licenses

- Choose the licenses you want to activate.
- Choose the locally connected CmContainer.
- Click "Activate Licenses".

<input checked="" type="checkbox"/>	Product ID	Product Name	Status
<input checked="" type="checkbox"/>	ED002	Enterprise Dynamics Developer	Available

Choose your CmContainer
32767-3645971329 (INCONTROL)

Activate Licenses

Offline Activation

Enterprise Dynamics®, Pedestrian Dynamics® & SportEvac® | © 2000-2013 INCONTROL Simulation Solutions | 2013-11-27 11:46:41 (CET)
CodeMeter License Central WebDepot v13.09.21.200 | © 2012-2013 WIBU-SYSTEMS AG | Legal Notice | 2013-11-27 10:46:41 (UTC)

- Select 'Offline Activation'
- Browse and select the container file created in step #6 and mark all products you want to use.

INCONTROL
Simulation Solutions

Get Licenses English

Your Licenses

- Generate a License Request File from your CmContainer (You can use CodeMeter Control Center). Use **Firm Code 5000302**.
- Choose the licenses you want to activate.
- Pick the License Request File.
- Click "Get License Update" to download a License Update File for your CmContainer.
- Import the License Update File into your CmContainer (You can use CodeMeter Control Center).

<input checked="" type="checkbox"/>	Product ID	Product Name	Status
<input checked="" type="checkbox"/>	ED002	Enterprise Dynamics Developer	Available

Choose your CmContainer
32767-3645971329 (INCONTROL)

Activate Licenses

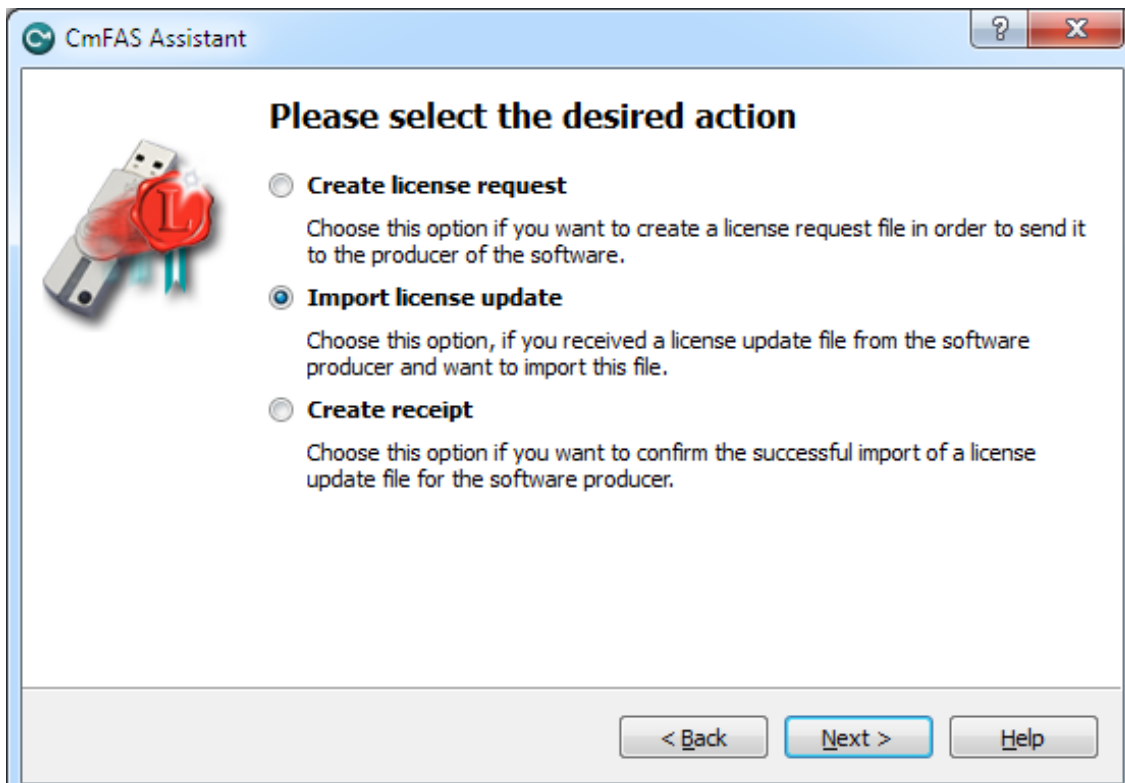
Offline Activation

Enterprise Dynamics®, Pedestrian Dynamics® & SportEvac® | © 2000-2013 INCONTROL Simulation Solutions | 2013-11-27 11:46:41 (CET)

ATTENTION: All the selected licenses are transferred to the machine you are working on. Having multiple licenses on a single machine makes only sense if you are configuring a (license) server.

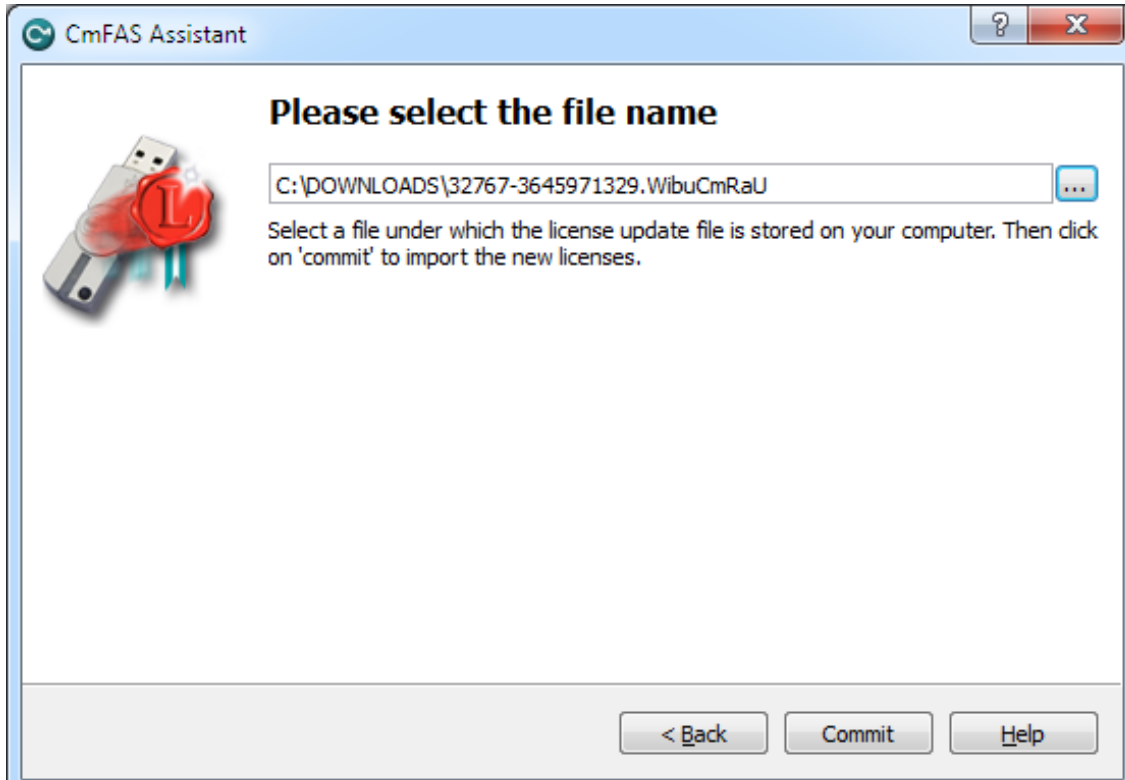


12. Press 'Get License Update' and save the generated file. Transport this file to the computer containing the Enterprise Dynamics installation.
13. Open CodeMeter Control Center and select the INCONTROL CmContainer.
14. Click on the "Activate License" button.
15. This time select the 'Import license update' option and press next.

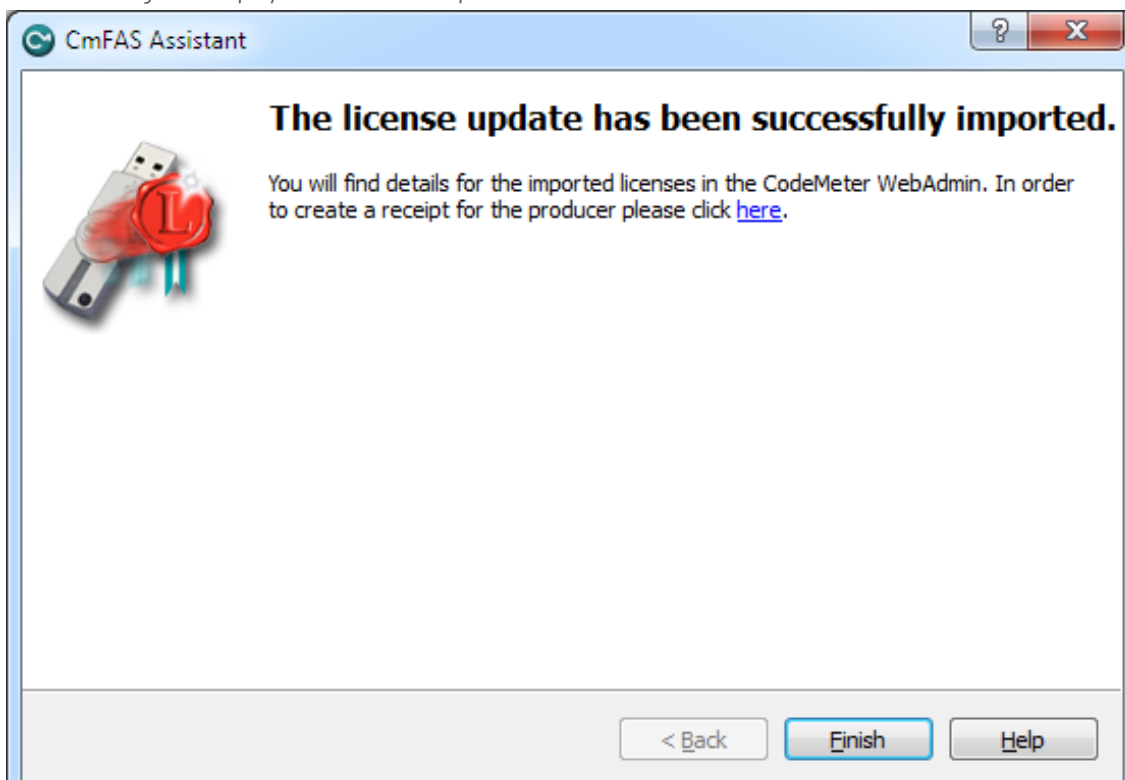




16. Browse to the file created on the internet connected machine and press commit. (e.g. from a flash drive, USB device, CD...)



17. A message will display that the license update was successful



18. The software is now licensed. Please repeat the last steps and create a receipt. Send your receipt file to support@incontrolsim.com



OTHER ACTIVATIONS

If the methods mentioned above fail, please contact the INCONTROL Support hotline (+31 30 6703798) to have an alternative activation method.

When the process was successful, you will see the Codemeter icon display green:



We welcome your remarks, suggestions and ideas for improvement of the Enterprise Dynamics software. Please send them to us directly or ask your local agent to transfer them to us.

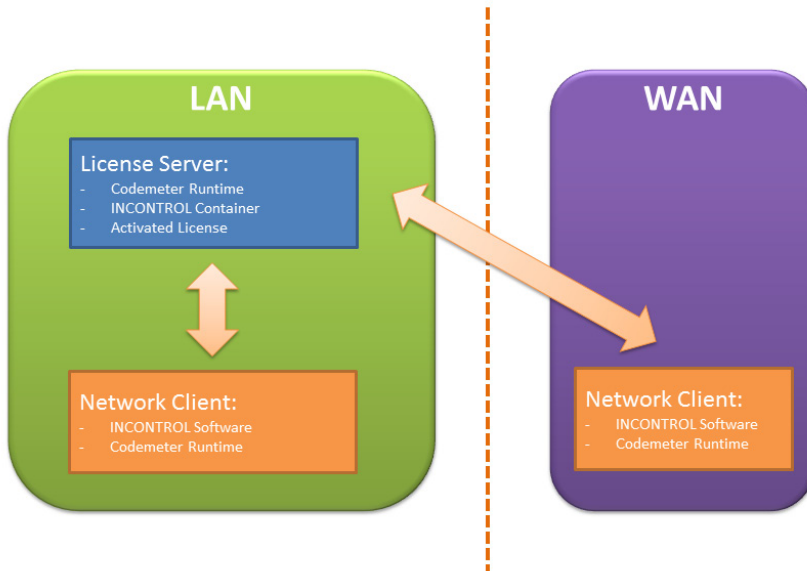
We look forward to hear from you or to meet you at one of our user conferences.

Kind regards,
INCONTROL Simulation Software B.V.



NETWORK CONFIGURATION

All Enterprise Dynamics licenses that are activated using a ticket can be run either as stand-alone or in a network environment.



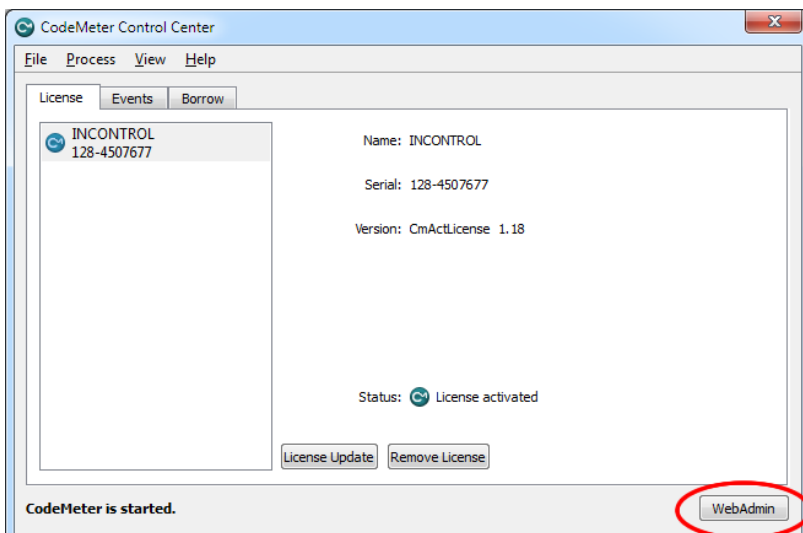
The installation consists of 2 steps:

- **Client:** Installation of the Enterprise Dynamics software and the Codemeter software
- **Server:** Installation of the Codemeter software including the INCONTROL Container and activating the license(s) using your ticket

ATTENTION: It is not possible to place the licenses on virtualized hardware (servers).

Once you have activated the Enterprise Dynamics license(s) on your server, you must configure the server and can configure the client to be able to communicate and exchange the license information.

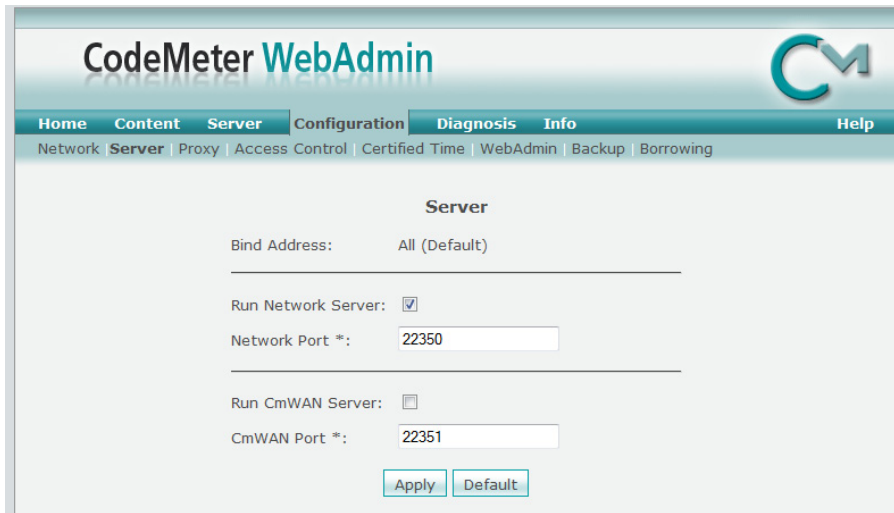
To configure network licensing you need to open the Codemeter Control Center. This can be done by pressing the icon in the taskbar or from your application starter. Here you will find a button to launch the WebAdmin interface for the local machine.





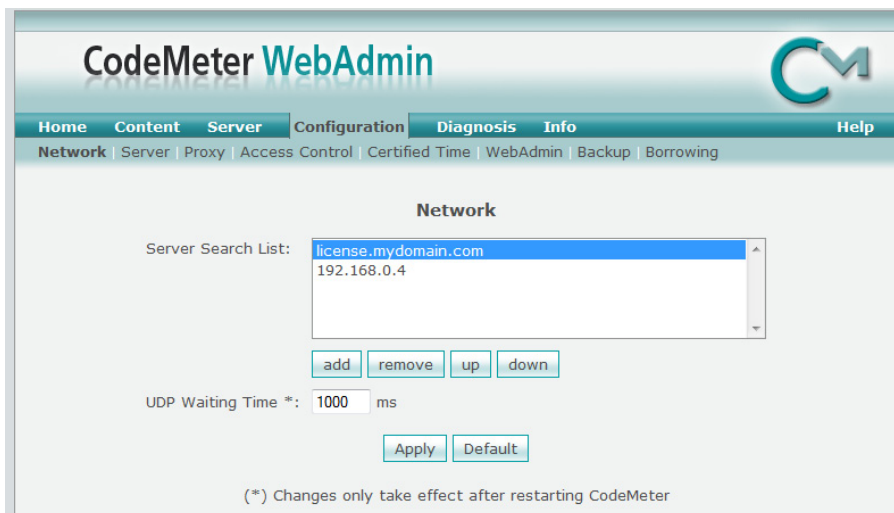
THE LICENSE SERVER

Under Configuration | Server, you can enable the “Run Network Server” and/or enable “Run the CmWAN” Server. Pressing apply will update the services. Here, you can also setup access control to the licenses and configure remote administration for WebAdmin.



THE NETWORK CLIENT

Under Configuration | Network, you can enter the server name or IP address where the licenses are stored. When nothing is entered, a broadcast will be done.



The WebAdmin interface has integrated local help.



SYSTEM REQUIREMENTS

OPERATING SYSTEM

In order to run Enterprise Dynamics®, you require the Microsoft Windows operating system. Enterprise Dynamics is proven compatible with:

- Microsoft Windows Vista
- Microsoft Windows 7
- Microsoft Windows 8

Enterprise Dynamics is a 32-bit application and will run without problems in 32-bit compatibility mode on a 64-bit version of a Windows Operating System.

To run Enterprise Dynamics on an Apple Mac, Microsoft Windows needs to be installed on it. This can be achieved using Boot Camp. It is not possible to run Enterprise Dynamics using Parallels Desktop since this is a virtual environment. We do not support running Enterprise Dynamics on other Operating Systems.

HARDWARE

The required hardware depends on how the software is used. Users who will only use the standard components in small to medium sized models with a limited number of 'products' require a different configuration than users who are exploring the limits the software's capabilities (most limitations on this level of usage are caused by hardware limitations). To give an idea which hardware configuration suits you best, we have listed two configurations, Minimum and Recommended. Most of the descriptions of hardware are very generic due to the fluid nature of computer hardware developments, but we will try to give you some insight.

Minimum

Processor: Intel 1.8 GHz Dual Core
 Memory: 500Mb
 Hard Disk space: 400 MB of free space
 Operating system: Windows Vista
 Video Card: OpenGL® 1.1

Recommended

Processor: Intel 2+ GHz quad+ core
 Memory: 8Gb+
 Hard Disk space: 1 Gb+
 Operating system: Windows 7
 Video Card: OpenGL® 3.0+

PROCESSOR

Some modern low power processors, such as Intel's Atom, have lower performance in highly demanding apps like Enterprise Dynamics than mainstream desktop and notebook processors. Consequently, large simulations will take longer to complete on these low power CPUs. An (i7) Quad Core processor (or higher) has better performance saving simulation time. That is why we recommend an i7 Quad Core or equivalent processor for Enterprise Dynamics.

VIDEO CARD

To use Enterprise Dynamics to its full extent, it is recommended that you use a laptop or desktop with a major brand (e.g. NVIDIA or AMD) 3D graphics card with at least 1Gb, but preferably 2Gb or more, of (non-shared) RAM (for network creation, textures and frame buffer). Enterprise Dynamics requires OpenGL® 1.1 but supports features introduced with OpenGL® 3.0. To use these features and have better visualization performance, ask your hardware supplier for a chip set that supports native OpenGL® 3.0 or higher.